

User Manual MINI-DIM (EN)



Matter Over WiFi Dimmer Switch

User Manual V1.0

Introduction

The MINI DIM (Matter Over WiFi) is an ultra-compact smart dimmer controller that effortlessly upgrades traditional lighting fixtures. It seamlessly integrates with dimmable LED lamps, incandescent bulbs, halogen lamps, and dimmable electronic transformers, supporting a maximum load of 2A. With Matter protocol support, it provides seamless cross-brand dimming control. Built-in overheat protection, power detection, and brightness calibration ensure both convenience and peace of mind for your smart home.



Remote Control



Voice Control



Smart Timer/Delay



Smart Scene



Support Matter



Brightness Calibration



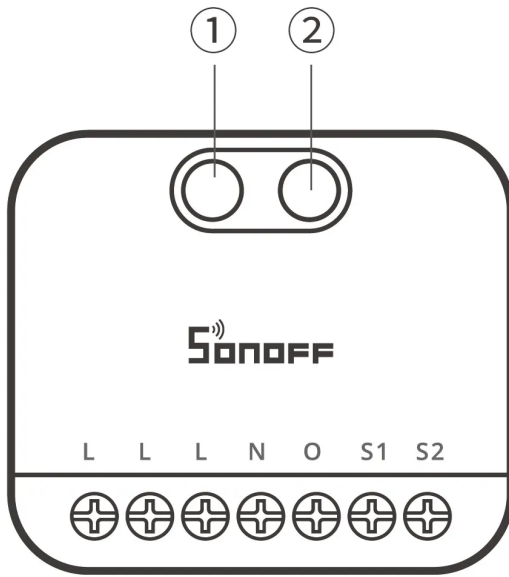
Over-Temperature Protection



Power Detection



Excellent Compatibility



① Button

- Single tap: Turn device on or off
- Press and hold for 5 seconds: Device enters the pairing mode (Pairing time 10 minutes)
- Click three times in succession: Switch external switch type
- Press and hold for 10 seconds: Auto-calibrate dimming
- Press and hold for 15 seconds: Restore factory settings

② Signal indicator light (Blue)

eWeLink Mode

- Flashes two short and one long: Device is in pairing mode
- Keeps on: Device is online
- Flashes once: Offline
- Flashes twice: Device is connected to the router but not to the cloud
- Flash three times: Switching to switch mode successful
- Breathing pattern: Device is calibrating
- Flashes five times quickly: Trigger factory reset

Matter Mode

- Flashes two short and one long: Device is in pairing mode
- Keeps on: Device is online
- Flashes once: Offline
- Flash three times: Switching to switch mode successful; Recognition
- Breathing pattern: Device is calibrating
- Flashes five times quickly: Trigger factory reset

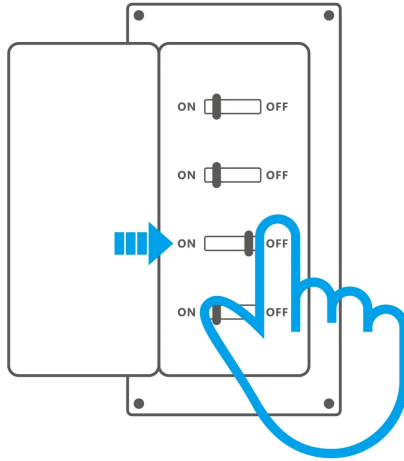


Specification

Product name	MINI DIM (Matter Over WiFi)
Product series	MINI Extreme series
Product type	Matter Over WiFi Dimmer Switch
Model	MINI-DIM
MCU	ESP32-C3
Rating	220-240V~ 50Hz 400W Max Resistive load \varnothing ϵ
LED	200VA
Wi-Fi	IEEE 802.11b/g/n 2.4GHz
Net weight	24.5g
Product dimension	45x39.4x16.8mm
Color	White
Casing material	PC
Diameter of wiring (recommend)	18AWG to 16AWG SOL/STR copper conductor only
Applicable place	Indoor
Working temperature	10T40 (-10°C~40°C)
Working humidity	5-95%RH, non-condensing
Certification	CE/RoHS

Installation

1. Power off



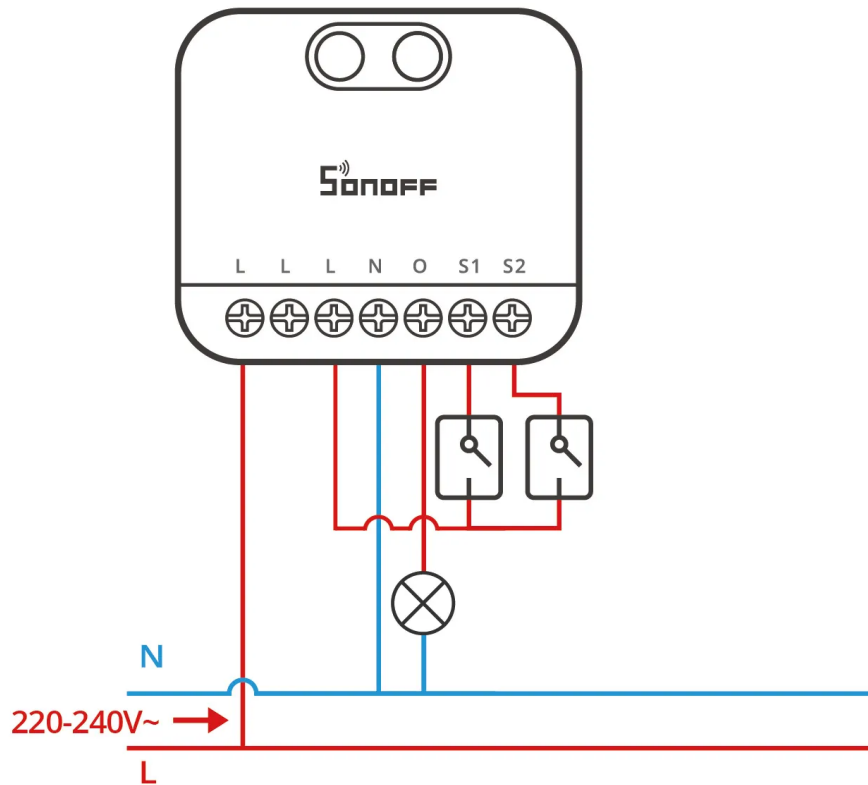
WARNING

- ① Please install and maintain the device by a professional electrician. To avoid electric shock hazard, do not operate any connection or contact the terminal connector while the device is powered on!
- ② For single-phase use only (220–240V~). Connecting to multiple phases may result in damage to the device.
- ③ To ensure the safety of your electrical installation, it's essential either a Miniature Circuit Breaker (MCB) or a Residual Current operated Circuit-breaker with Integral Overcurrent protection(RCBO) with an electrical rating of 2A has been installed before the MINI-DIM.

2. Wiring instruction

- Ⓢ It is prohibited to connect S1 and S2 terminals to the neutral or ground wire in order to avoid damaging the equipment and causing danger.
- Ⓢ Make sure all wires are connected correctly.
- Ⓢ Supported switches are rocker switch and push button and factory default by supporting double push button.

Notice: To match your external switch, first set the switch mode: select it in the eWelink app or short press the button 3 times until the LED signal indicator flashes 3 times quickly, now you change the switch type successfully.

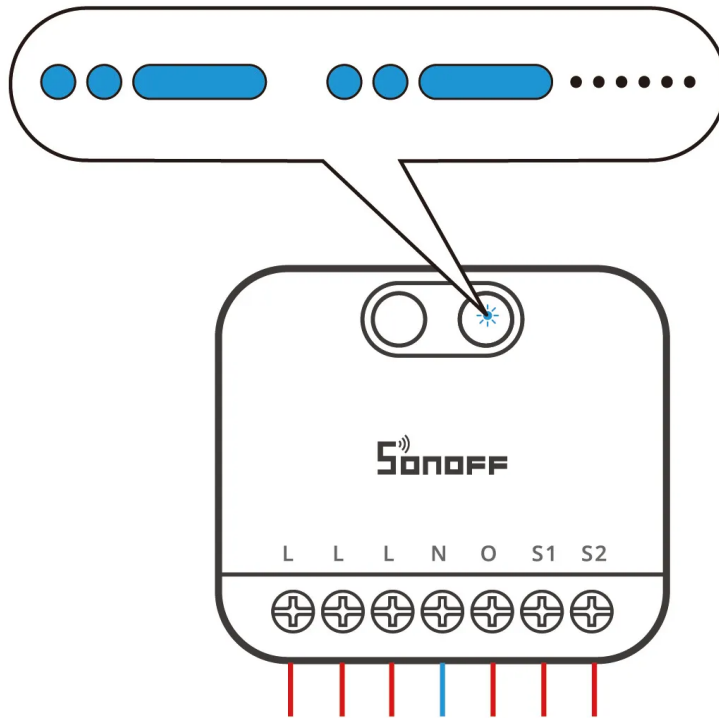


Instructions for wiring symbols

Terminals		Wires	
L	Live Terminal	L	Live Line (220–240V~)
N	Neutral Terminal	N	Neutral Line
O	Live Output Terminal (220–240 V~)		
S1	Switch_1		
S2	Switch_2		

3. Power on

When the device is used for the first time, it will enter pairing mode by default after being powered on. At this time, the LED indicator will flash in a pattern of "two short and one long".



⚠ The device will exit the Pairing Mode if not paired within 10mins. If you want to enter this mode, please long-press the button for about 5s until the LED indicator changes in a cycle of two short and one long flash and release.

Matter Ecosystem User Guide

Open a Matter-compatible App to scan the Matter QR code on the Quick Guide or the device itself to add the device.



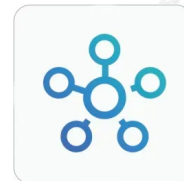
Add to Apple
via Matter



Add to
Google via
Matter



Add to Alexa
via Matter



Add to
SmartThings
via Matter



Add to Home
Assistant via
Matter

eWeLink Ecosystem User Guide

① Download the eWeLink App

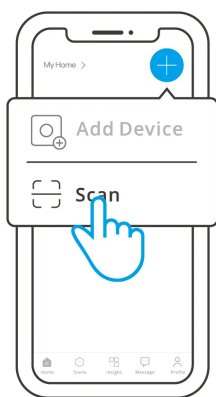
Please download the "eWeLink" App from Google Play Store or Apple App Store.

Q | 易微联



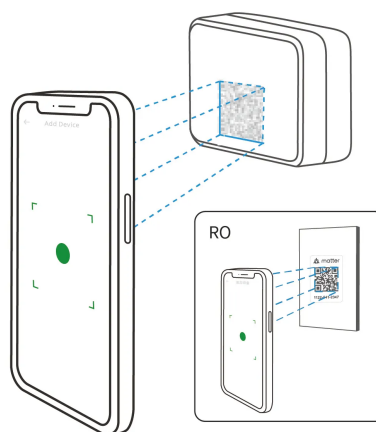
② Add Device

1



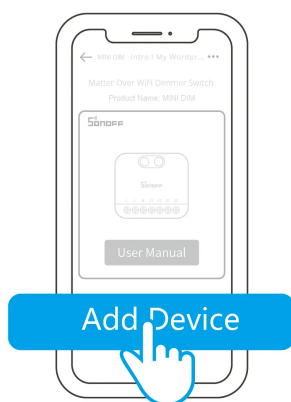
Enter "Scan"

2



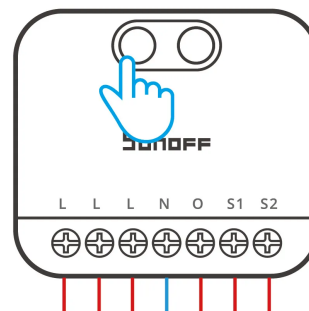
Scan the QR code on the quick guide or the device

3

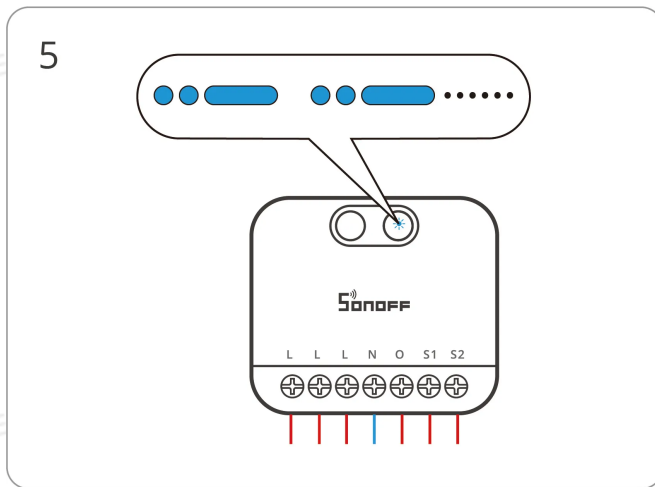


Select "Add Device"

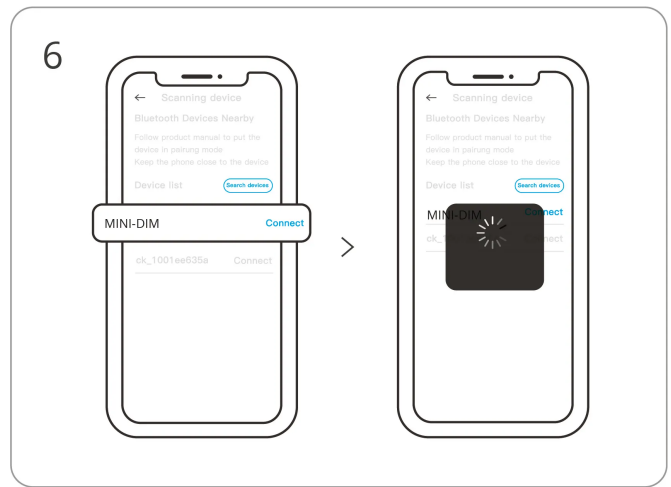
4



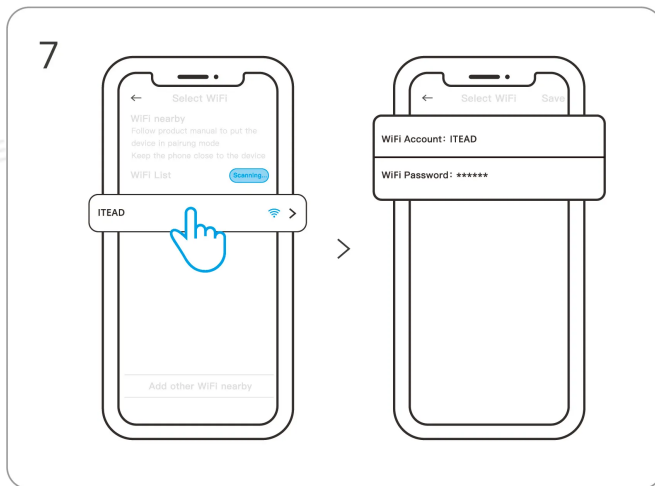
(If the device exits pairing mode)
Long press the button for 5 seconds



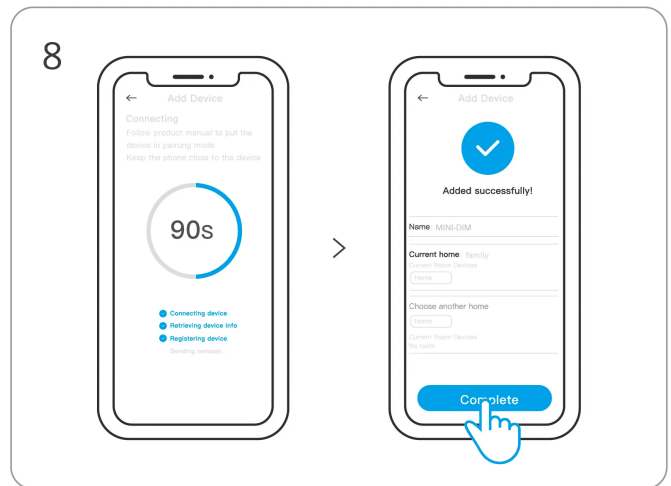
Check LED indicator flashing status
(Two short and one long)



Search for the device and start connecting



Select the "Wi-Fi" network and enter the password



Device "Added completely"

Brightness Range Calibration

To use percentage-based brightness control, it is necessary to calibrate the brightness range of the device. The calibration methods are as follows:

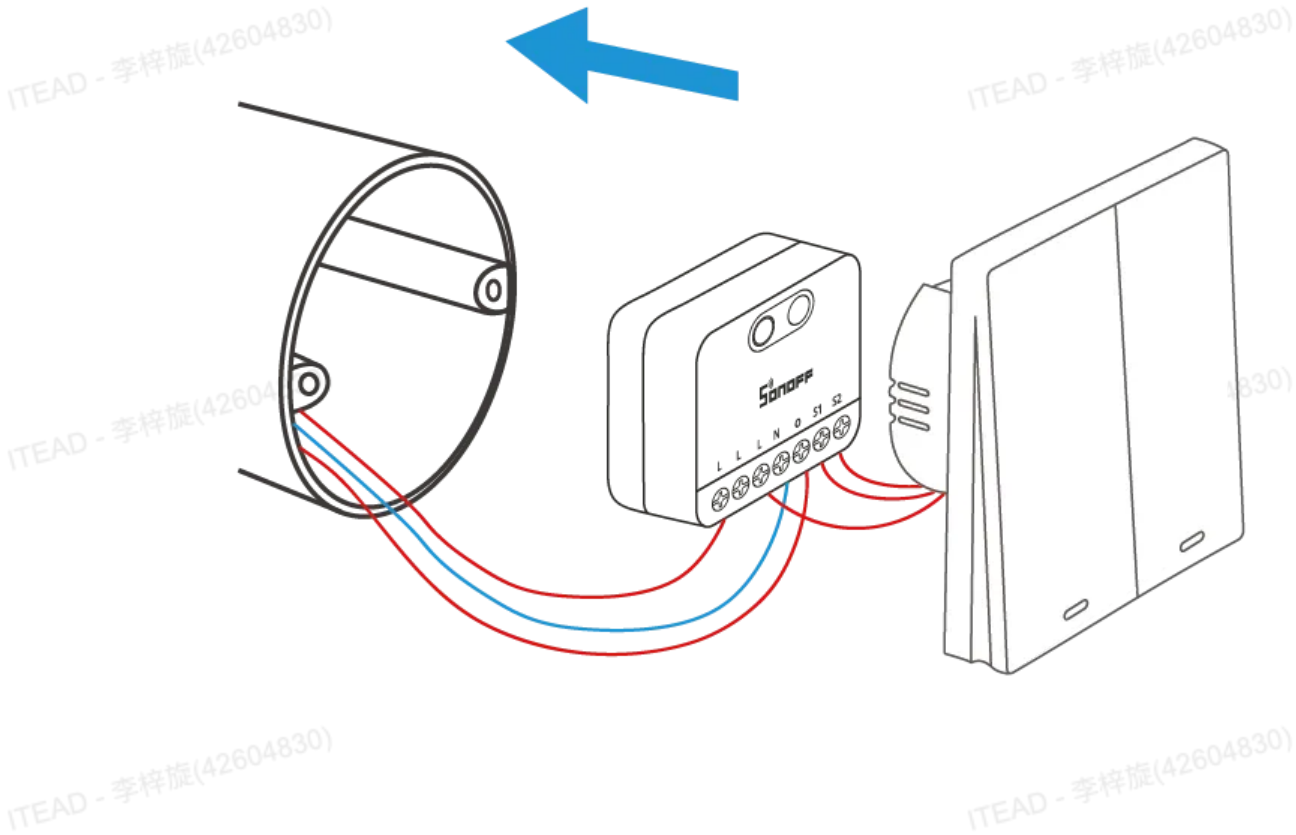
- **Auto Calibration**

Press and hold the device button for 10 seconds, or use "Auto Calibration" in the eWeLink app. The breathing indicator shows calibration is in progress.

- **Manual Calibration**

Adjust the brightness limits manually in the eWeLink app for fine-tuned calibration.

Install the device in the mounting box



Factory Reset

Trigger conditions (any one condition met)

- Delete the device on eWeLink App.
- The device that has been successfully paired can be paired again with another eWeLink account to add it.
- Press and hold the device button for 15 seconds.

EU Declaration of Conformity

Hereby, Shenzhen Sonoff Technologies Co., Ltd. declares that the radio equipment type MINI-DIM is in compliance with Directive 2014/53/EU. The full text of the EU declaration of conformity is available at the following internet address: <https://sonoff.tech/compliance/>

For CE frequency

EU Operating Frequency Range:

802.11 b/g/n20 2412–2472 MHz

802.11 n40: 2422–2462 MHz

BLE: 2402–2480 MHz

EU Output Power:

Wi-Fi 2.4G≤20dBm

BLE≤10dBm

Under normal use of condition, this equipment should be kept a separation distance of at least 20 cm between the antenna and the body of the user.

WEEE Disposal and Recycling Information



WEEE Disposal and Recycling Information All products bearing this symbol are waste electrical and electronic equipment (WEEE as in directive 2012/19/EU) which should not be mixed with unsorted household waste. Instead, you should protect human health and the environment by handing over your waste equipment to a designated collection point for the recycling of waste electrical and electronic equipment, appointed by the government or local authorities. Correct disposal and recycling will help prevent potential negative consequences to the environment and human health. Please contact the installer or local authorities for more information about the location as well as terms and conditions of such collection points.

Scatola	Manuale
PAP 21	PAP 22
Carta	Carta
RACCOLTA DIFFERENZIATA	

Verifica le disposizioni del tuo Comune.

Separa le componenti e conferiscile in modo corretto.

SONOFF

Manufacturer: Shenzhen Sonoff Technologies Co., Ltd.

Address: 3F & 6F, Bldg A, No. 663, Bulong Rd, Shenzhen, Guangdong, 518000, China

Website: sonoff.tech

Service email: support@itead.cc

MADE IN CHINA



FR

**Cet appareil
se recycle**

À DÉPOSER
EN MAGASIN



OU

À DÉPOSER
EN DÉCHÈTERIE



Points de collecte sur www.quefairedemesdechets.fr
Privilégiez la réparation ou le don de votre appareil !

